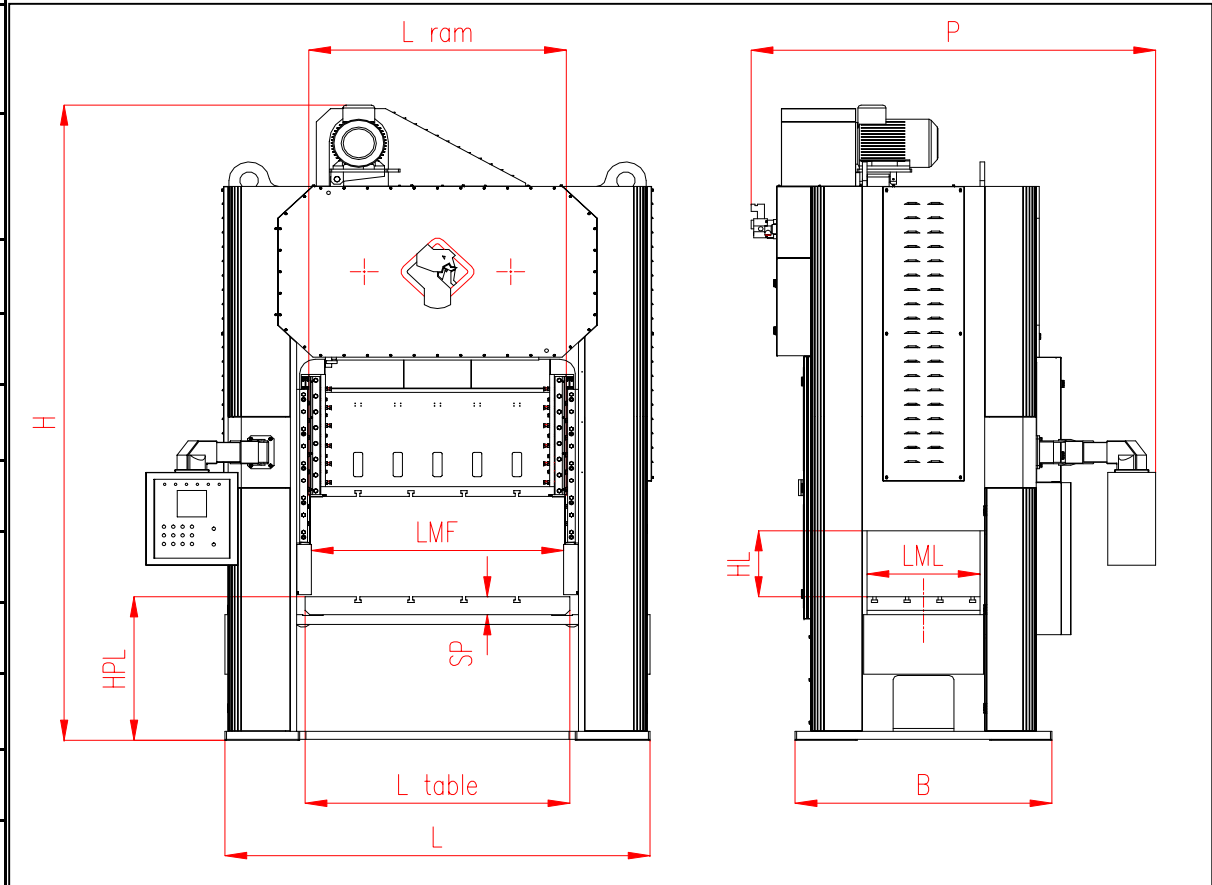




PRESSA S.GIACOMO MODELLO 200 DM-DBV piano 1700x1000

FILE:200 DM-DBV piano 1700x1000 STD.xls

CARATTERISTICHE		
SPINTA MAX A 6,35mm DAL PMI CAPACITY AT 6,35mm FROM B.D.C A 50 COLPI(STROKES)/MIN	kN	2000
COLPI AL MINUTO CON VEL. VARIABILE NOMINALE STROKES PER MIN. IN VARIABLE SPEED	N°/min	35÷80
CORSA STANDARD STANDARD SLIDE STROKES	mm	20÷200
DISTANZA PIANO-SLITTA AL PMI DISTANCE TABLE-RAM AT B.D.C.	mm	500
REGOLAZIONE SLITTA SLIDE ADJUSTMENT	mm	100
DIMENSIONI TAVOLA TABLE DIMENSIONS	mm ²	1700x1000
DIMENSIONI PIANO SLITTA RAM SURFACE	mm ²	1750x1000
SPESSORE APPROSS. TAVOLA APROXIMATIVE THICKNESS TABLE	SP[mm]	125
PASSAGGIO FRONTALE MONTANTI FRONT GAP BETWEEN UPRIGHTS	LMF[mm]	1620
LARGHEZZA PASSAGGIO LATERALE LATERAL GAP WIDTH	LML[mm]	720
ALTEZZA PASSAGGIO LATERALE LATERAL GAP HEIGHT	HL [mm]	450
POTENZA MOTORE PRINCIPALE MAIN MOTOR POWER	kW	22
POTENZA MOTORE SLITTA SLIDE ADJUST. MOTOR POWER	kW	2,2
INGOMBRI OVERALL DIMENSIONS	H[mm]	4430
	L[mm]	2730
	P[mm]	2330
	B[mm]	1650
ALTEZZA PIANO DI LAVORO HEIGHT OF WORK-SURFACE	HPL[mm]	1000
PESO APPROSSIMATIVO APROXIMATIVE WEIGHT	kg	25000



NOTE: STRUTTURA MONOLITICA IN ACCIAIO NORMALIZZATO
NOTES: THE MONOLITHIC STEEL STRUCTURE IS NORMALIZED



STRAIGHT SIDE (change strokes, with NC control)

PLC Fail-Safe **SIEMENS**

TOUCH-SCREEN PANEL **SIEMENS**



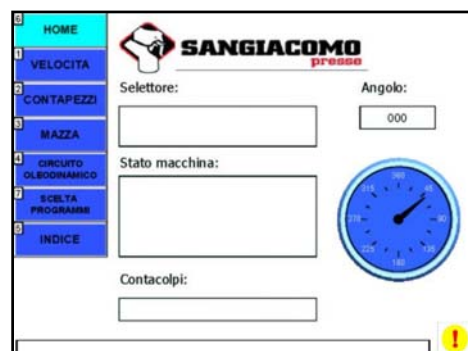
The control panel includes the following working functions:

- inching, by two-hand control
- single stroke, by two-hand control
- continuous cycle, by two-hand control
- single stroke with foot pedal
- continuous cycle, start by pedal and stop by pedal at the T.D.C.
- continuous cycle, start by pedal and stop by push-button at the T.D.C.
- single stroke for closed dies, start by pedal
- continuous cycle for closed dies, start by pedal and stop by pedal at the T.D.C.
- reverse motor possible on inching mode.

Every one of above selections automatically activates the related protection guards in order to guarantee the maximum safety level for the operator.

The control panel is equipped with:

- Total and partial stroke-counter and a hour-counter.
- Memorization of main parameter of use of the press
- Start-Timer function
- Check-up continuous
- Easy information regarding the status of the press
- (NC) Automatic stroke change
- (NC) Adjustable speed
- (NC) Balancing cylinders automatic adjustment
- (NC) Overload system automatic adjustment
- (NC) Distance table-ram automatic adjustment
- (NC) N°8 Electronic cams
- (NC) N°4 Signal "safe tool"



Numeric Control permits to store more than ten thousand Tools Program.

Recalling a Tool Program automatically and simultaneously the press make all set-up in a very short time.

It is possible to supply an interface connection for external device.